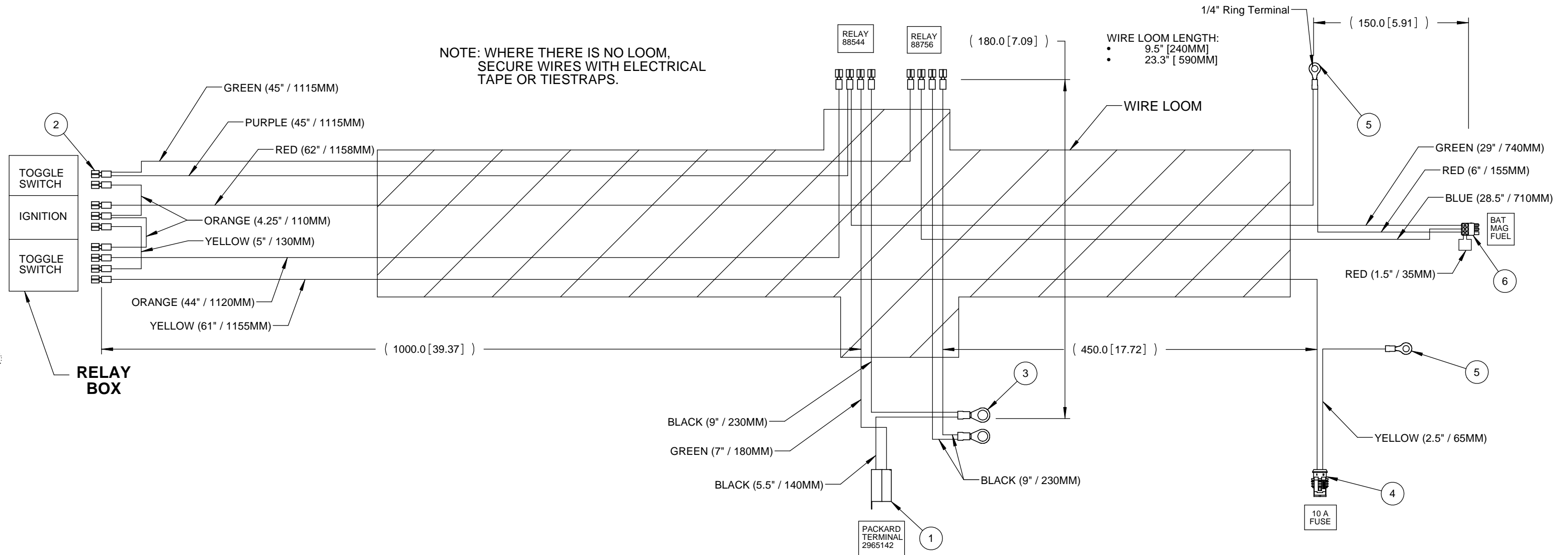


POWERUNIT 06 - WIRING HARNESS

NOTE: WHERE THERE IS NO LOOM, SECURE WIRES WITH ELECTRICAL TAPE OR TIESTRAPPS.



3RD ANGLE PROJECTION		TOLERANCES (UNLESS OTHERWISE SPECIFIED) DIMENSIONS ARE IN MILLIMETERS.		Quadvator ^{INC}		88723A	
PROPRIETARY AND CONFIDENTIAL THE INFORMATION CONTAINED IN THIS DRAWING IS PROPRIETARY AND CONFIDENTIAL. ANY REPRODUCTION IN WHOLE OR IN PART WITHOUT WRITTEN PERMISSION IS EXPRESSLY PROHIBITED. DO NOT SCALE DRAWING		LINEAR ANGULAR X. ± 2.0 X. ± 1.0 .X ± 1.0 .X ± 0.5 .XX ± 0.5 HOLES: +0.5 - 0 BEND RADIUS = MAT'L THICKNESS SURFACE ROUGHNESS: 6.3					
NEXT ASSY. -		QTY. PER ASSY. -		PART DESCRIPTION WIRING HARNESS - 06 POWERUNIT			
PART NO. 88723A		SIMILIAR PART 88723		RAW MATERIAL: See Bill of Materials			
DESIGNED JC		DRAWN GK		RAW MAT NUMBER: SEE B.O.M.			
0		842		SCALE		WEIGHT (LB.)	
Release for Production		07/10/2006		1:4		11.2	
ECO		DATE		SHEET		REVISION	
APPR		APPR		1 of 1		0	

ITEM	Default/Q TY.	PART	DESCRIPTION
1	1	2984883	Packard Terminal - 2 Pin
2	17	CON - 300	1/4" FEMALE SPADE CONNECTOR
3	2	Default	TERMINAL - RING TONGUE 1/2"
4	1	CON - 302	PED 15 FUSE HOLDER
5	2	Default	TERMINAL, RING TONGUE 1/4"
6	1	CON - 304	6 PIN CONNECTOR